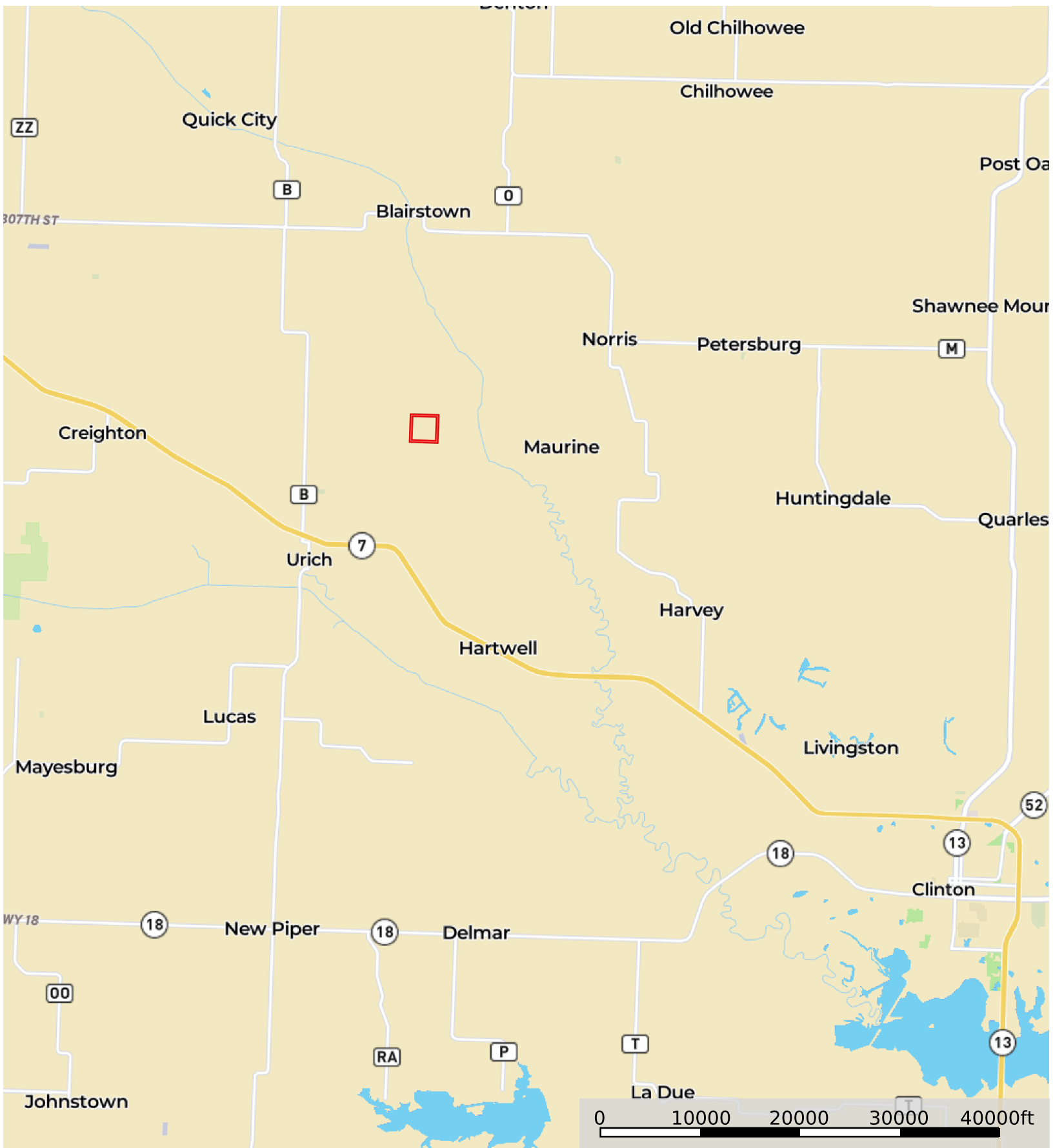



# Henry.160 / Grasher - Missouri

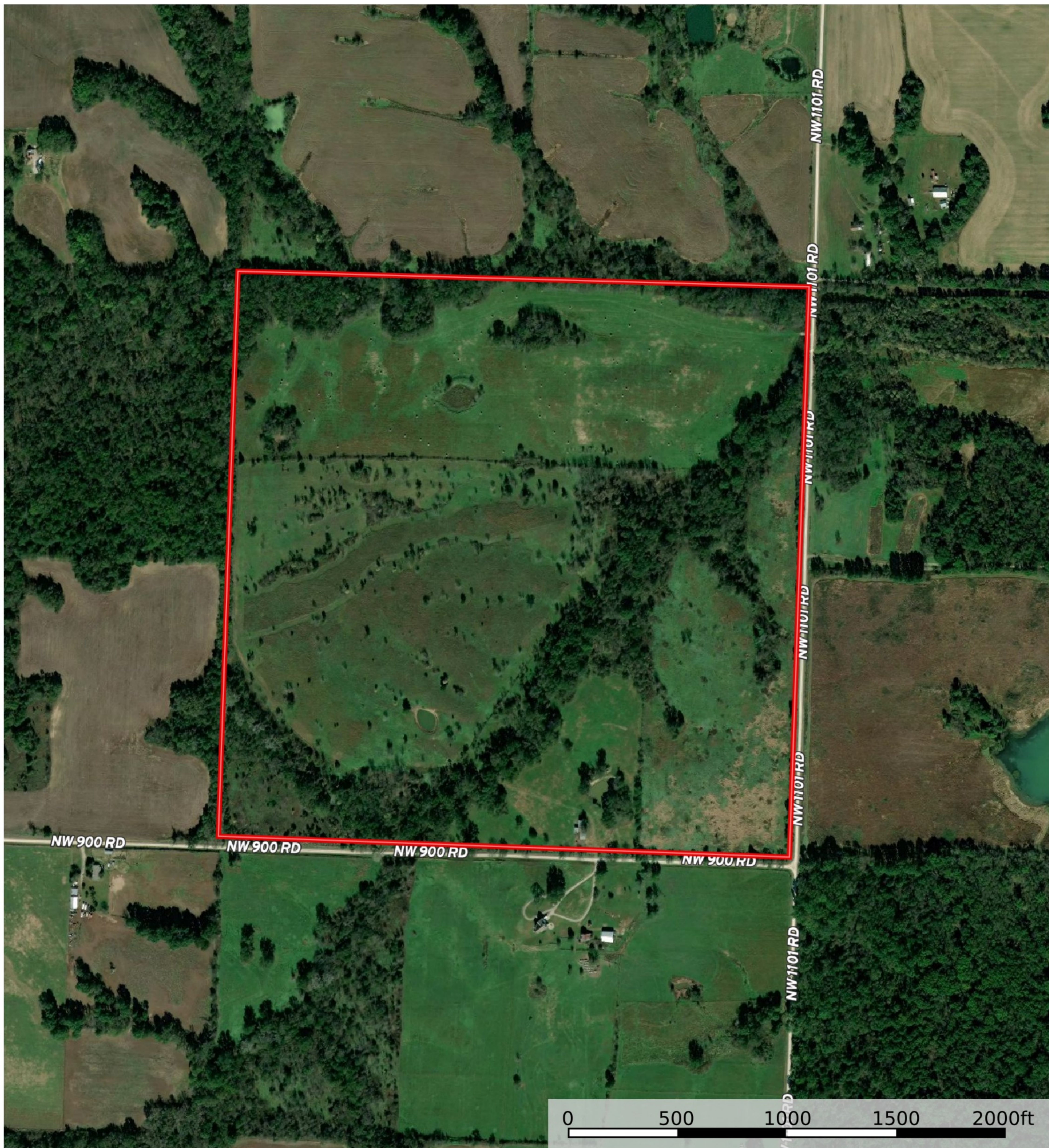
Henry County, Missouri, 160 AC +/-



 Boundary

# Henry.160 / Grasher - Missouri

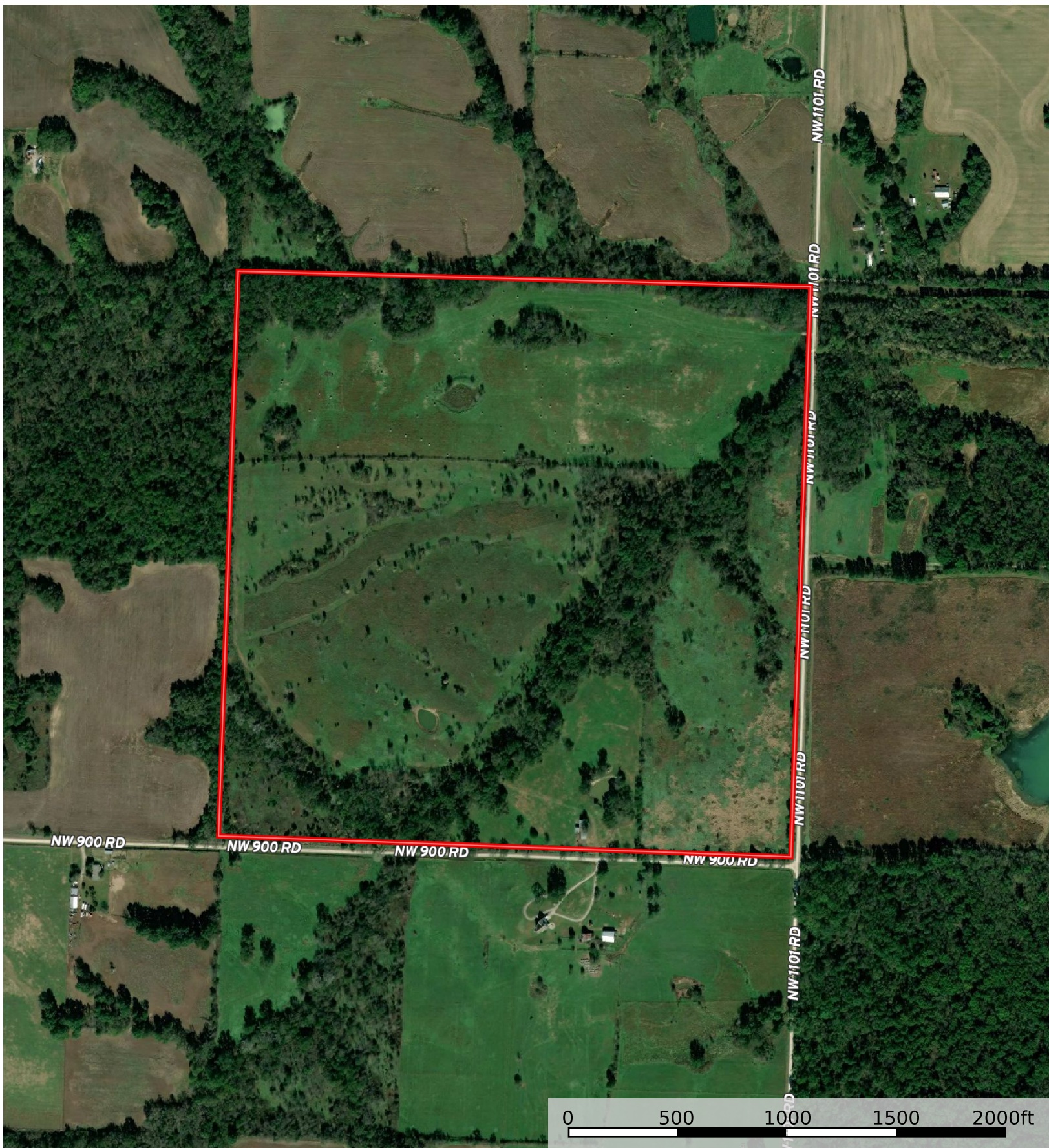
Henry County, Missouri, 160 AC +/-




 Boundary

# Henry.160 / Grasher - Missouri


Henry County, Missouri, 160 AC +/-



 Boundary

Henry.160 / Grasher - Missouri  
Henry County, Missouri, 160 AC +/-



 Boundary

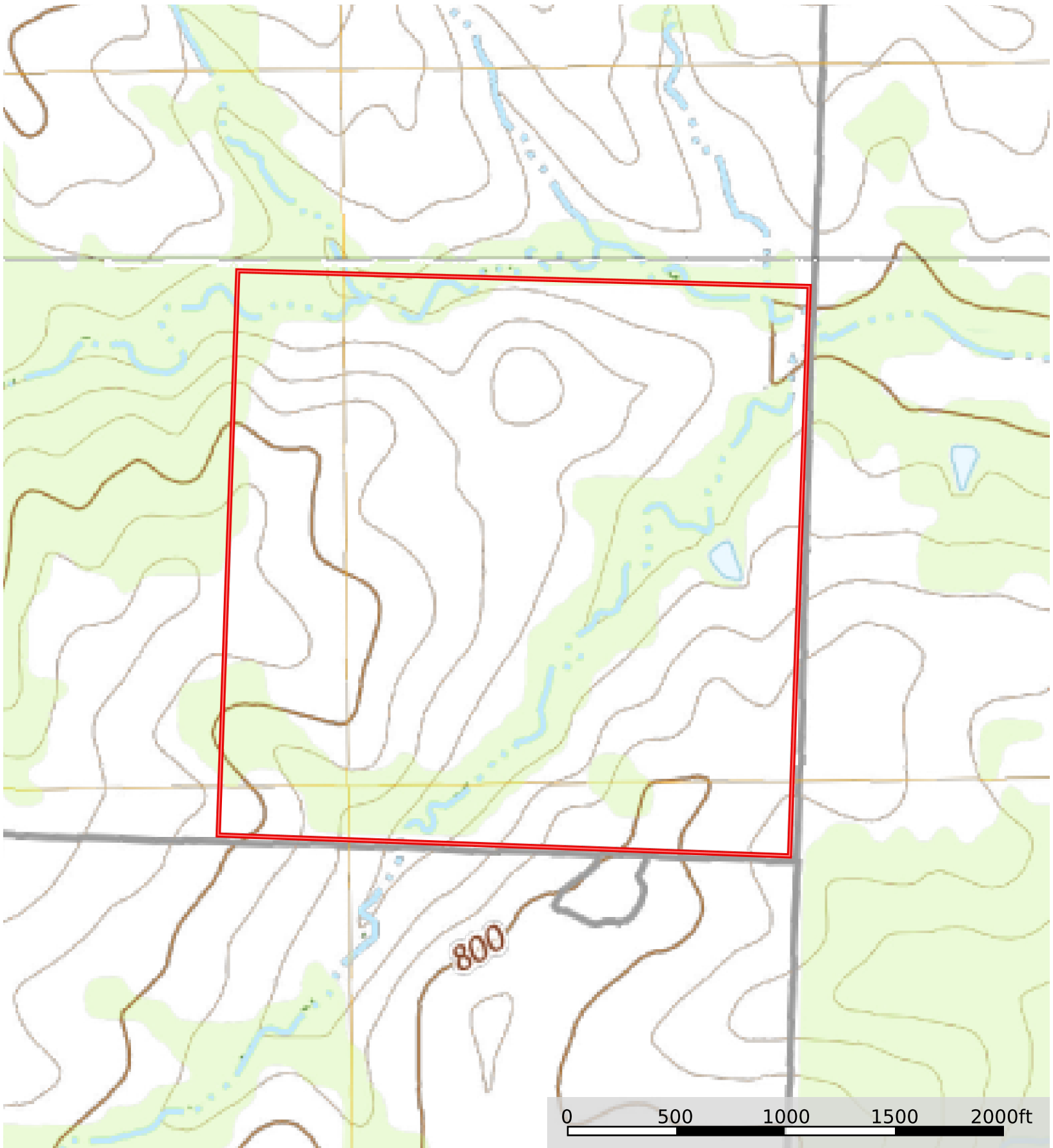
**Boundary 156.51 ac**

SOIL CODE	SOIL DESCRIPTION	ACRES	%	CPI	NCCPI	CAP
40089	Roseland silt loam, 2 to 9 percent slopes	39.66	25.34	0	67	4e
44107	Muldraw silt loam, 1 to 3 percent slopes, rarely flooded	33.31	21.29	0	67	3w
40088	Roseland silt loam, 9 to 14 percent slopes	31.54	20.15	0	64	6e
40037	Barco loam, 5 to 9 percent slopes, eroded	22.95	14.67	0	45	4e
40053	Deepwater silt loam, 2 to 5 percent slopes	13.18	8.42	0	86	2e
40056	Deepwater silt loam, 5 to 9 percent slopes, eroded	7.69	4.91	0	79	3e
44007	Muldraw silt loam, 0 to 2 percent slopes, rarely flooded	5.8	3.71	0	84	2w
40054	Deepwater silt loam, 2 to 5 percent slopes, eroded	2.38	1.52	0	79	3e
TOTALS		156.5 1(*)	100%	-	66.18	3.88

(\*) Total acres may differ in the second decimal compared to the sum of each acreage soil. This is due to a round error because we only show the acres of each soil with two decimal.



**Henry.160 / Grasher - Missouri**  
Henry County, Missouri, 160 AC +/-



 Boundary