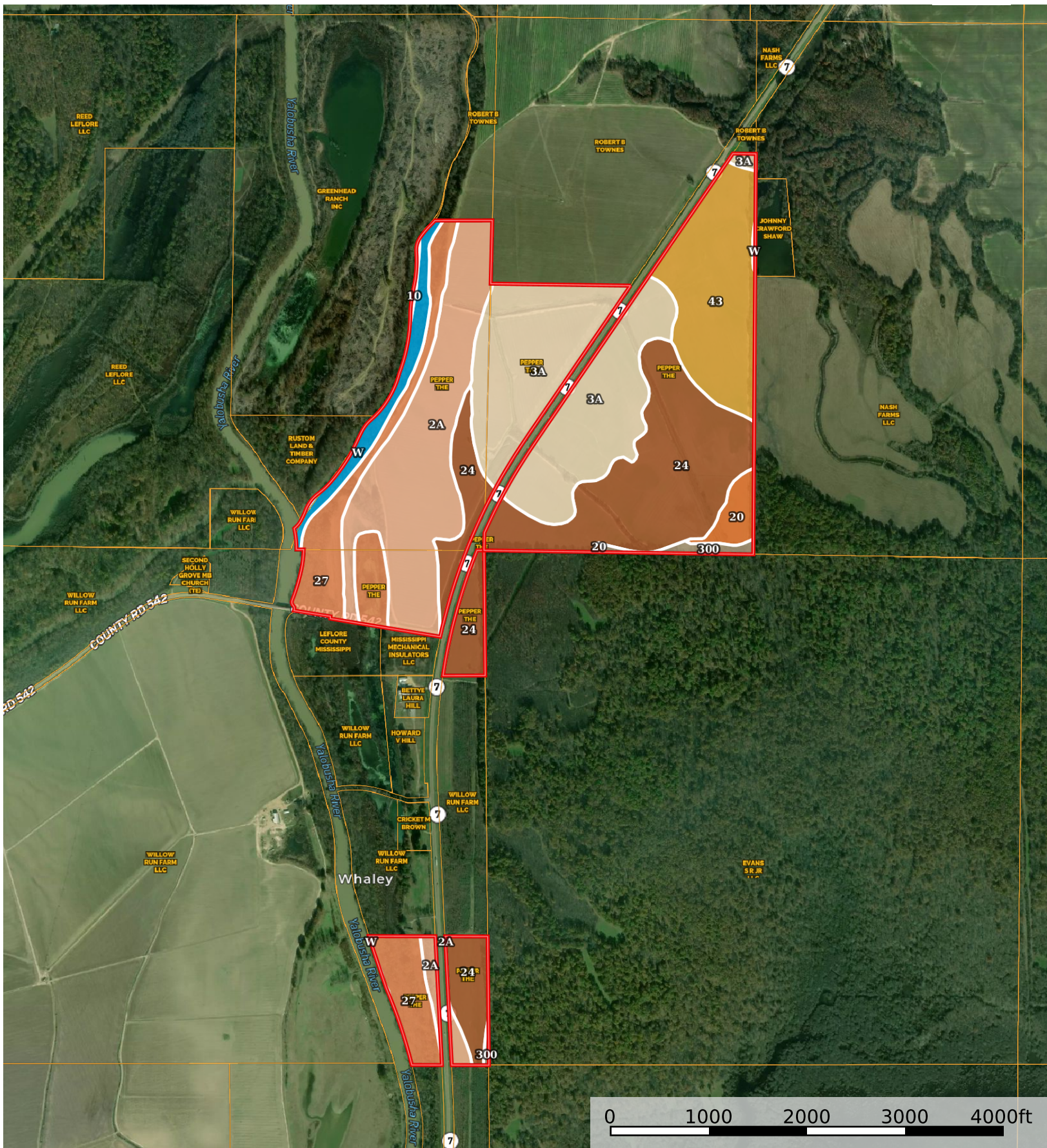


Carroll.306

Carroll County, Mississippi, 306 AC +/-



 Boundary

|  All Polygons 308.34 ac

SOIL CODE	SOIL DESCRIPTION	ACRES	%	CPI	NCCPI	CAP
3A	Dundee silt loam, 0 to 2 percent slopes	81.24	26.35	0	86	2w
24	Forestdale silt loam	77.99	25.29	0	64	3w
2A	Dubbs silt loam, 0 to 2 percent slopes, rarely flooded	61.19	19.84	0	90	2e
43	Falaya silt, occasionally flooded	41.38	13.42	0	77	2w
27	Sharkey clay, frequently flooded	26.94	8.74	0	42	5w
W	Water	10.74	3.48	0	-	-
20	Alligator silty clay	5.8	1.88	0	48	3e
300	Sharkey clay, ponded	2.57	0.83	0	19	5w
10	Arkabutla and Falaya soils, 0 to 5 percent slopes, frequently flooded	0.49	0.16	0	61	4w
TOTALS		308.34(*)	100%	-	71.87	2.58

(*) Total acres may differ in the second decimal compared to the sum of each acreage soil. This is due to a round error because we only show the acres of each soil with two decimal.

|  Boundary 149.0 ac

SOIL CODE	SOIL DESCRIPTION	ACRES	%	CPI	NCCPI	CAP
24	Forestdale silt loam	58.75	39.43	0	64	3w
43	Falaya silt, occasionally flooded	41.38	27.77	0	77	2w
3A	Dundee silt loam, 0 to 2 percent slopes	40.25	27.01	0	86	2w
20	Alligator silty clay	5.8	3.89	0	48	3e
300	Sharkey clay, ponded	2.57	1.72	0	19	5w
W	Water	0.25	0.17	0	-	-
TOTALS		149.0(*)	100%	-	72.05	2.49

(*) Total acres may differ in the second decimal compared to the sum of each acreage soil. This is due to a round error because we only show the acres of each soil with two decimal.

|  Boundary 151.22 ac

SOIL CODE	SOIL DESCRIPTION	ACRES	%	CPI	NCCPI	CAP
2A	Dubbs silt loam, 0 to 2 percent slopes, rarely flooded	61.19	40.46	0	90	2e
3A	Dundee silt loam, 0 to 2 percent slopes	40.99	27.1	0	86	2w
27	Sharkey clay, frequently flooded	26.94	17.81	0	42	5w
24	Forestdale silt loam	11.12	7.35	0	64	3w
W	Water	10.49	6.94	0	-	-
10	Arkabutla and Falaya soils, 0 to 5 percent slopes, frequently flooded	0.49	0.32	0	61	4w
TOTALS		151.22(*)	100%	-	72.11	2.66

(*) Total acres may differ in the second decimal compared to the sum of each acreage soil. This is due to a round error because we only show the acres of each soil with two decimal.

|  Boundary 8.12 ac

SOIL CODE	SOIL DESCRIPTION	ACRES	%	CPI	NCCPI	CAP
24	Forestdale silt loam	8.12	100	0	64	3w
TOTALS		8.12(*)	100%	-	64.0	3

(*) Total acres may differ in the second decimal compared to the sum of each acreage soil. This is due to a round error because we only show the acres of each soil with two decimal.

