

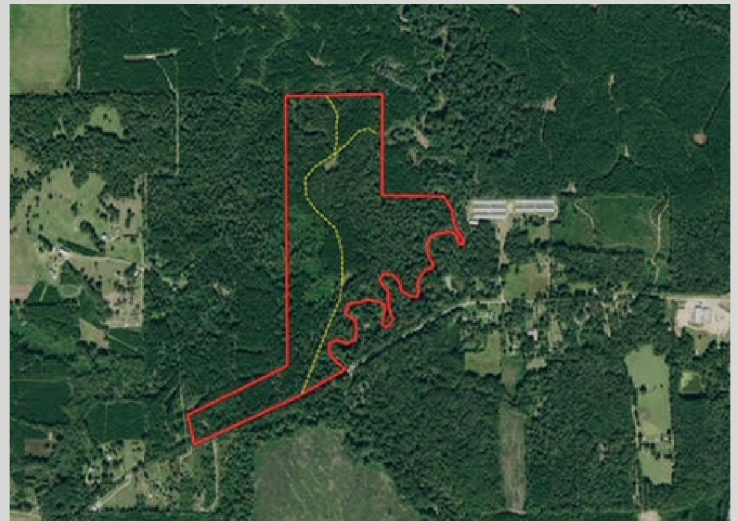
LAND FOR SALE

Check out this +/- 125 acre timber investment and hunting property located in southern Copiah County, MS. This tract consists of 113 acres of timber with approximately 27 acres being mature pine plantation and the remaining timber being 86 acres of mostly mature hardwood in the Bayou Pierre bottom. The remaining property makeup consists of an 11 acre deer bedding and cover area. Established trail system with two food plots. This tract has over a mile of frontage along the famed Bayou Pierre,. Properties along the Bayou Pierre bottom have historically been known for producing trophy whitetails in southwest Mississippi. Majority of the property is in the Bayou Pierre flood zone; however, there is 5 acres of high and dry ground suitable for structures on the corner of Sylvarena and Pleasant Lane. Over 2,400' of frontage along Sylvarena Rd and Pleasant Lane. Established trail system. Utilities readily available along the road. Located just minutes from Wesson and one mile from I-55, this tract is conveniently located to amenities and easily accessible from the interstate. This is a great opportunity to secure your own timber investment, hunting tract, or homplace along the Bayou Pierre in Copiah County, MS! There is adjacent property available as well.

\$495,000



Copiah County, MS | 125 +/- Acres



Dillon Walker | Forester, Land Professional
(C) 601-503-4631
(O) 601.209.4882
dwalker@backwoodsland.com

SCAN TO
VIEW WEBSITE

