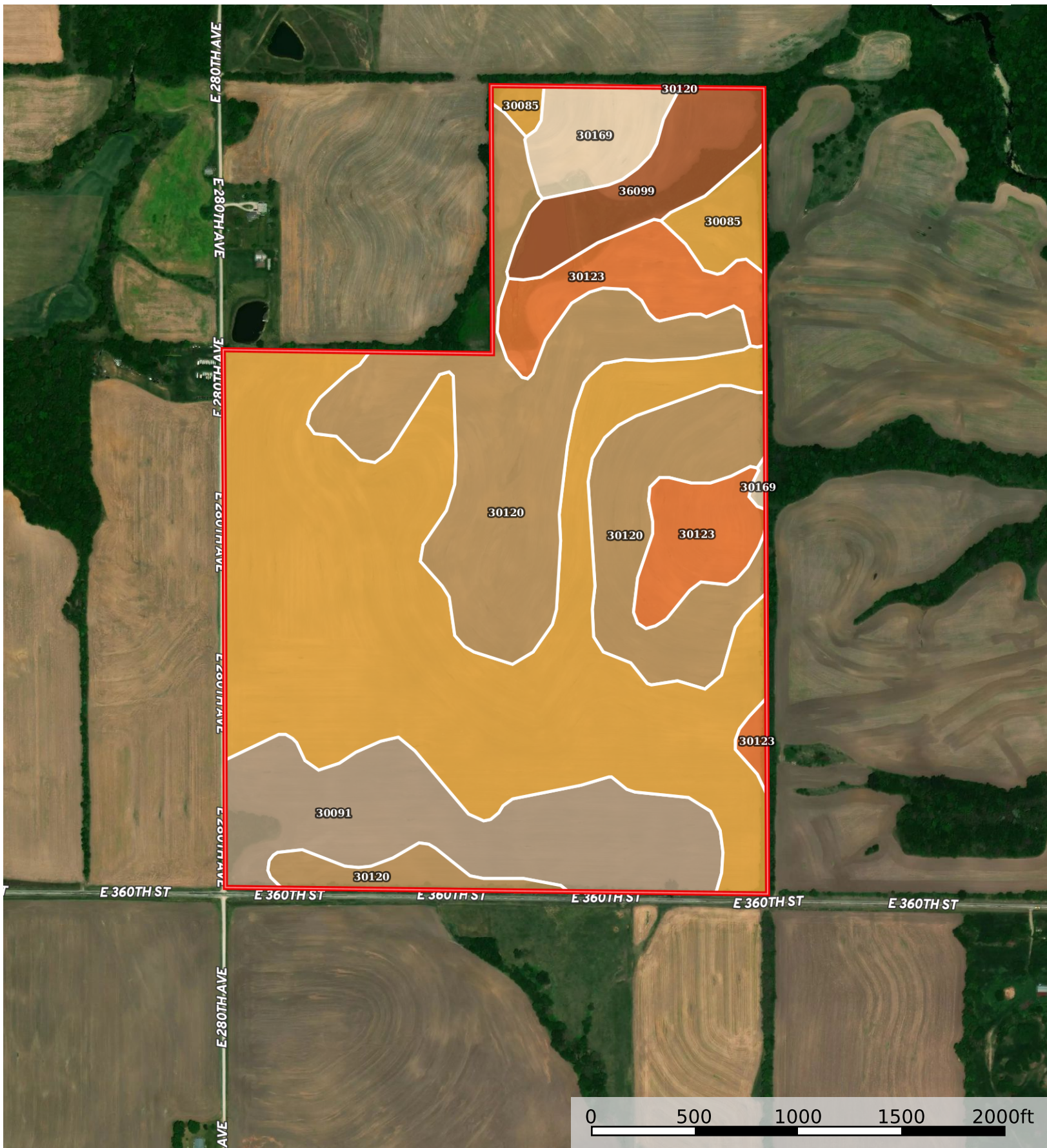


Harrison.196.D&G Farms / Missouri
Harrison County, Missouri, 196.5 AC +/-



 Boundary

|  Boundary 196.33 ac

SOIL CODE	SOIL DESCRIPTION	ACRES	%	CPI	NCCPI	CAP
30085	Grundy silt loam, 2 to 5 percent slopes	82.81	42.18	0	74	2e
30120	Lagonda silty clay loam, 5 to 9 percent slopes, eroded	52.8	26.89	0	67	3e
30091	Grundy silty clay loam, 2 to 5 percent slopes, moderately eroded	26.29	13.39	0	74	2e
30123	Lagonda silty clay loam, 5 to 9 percent slopes, severely eroded	17.27	8.8	0	55	4e
36099	Zook-Colo silty clay loams, 1 to 3 percent slopes, frequently flooded	10.23	5.21	0	66	3w
30169	Pershing silt loam, 5 to 9 percent slopes	6.93	3.53	0	73	3e
TOTALS		196.3 3(*)	100%	-	69.99	2.53

(*) Total acres may differ in the second decimal compared to the sum of each acreage soil. This is due to a round error because we only show the acres of each soil with two decimal.

