

PROPERTY OFFERED BY BACKWOODS LAND CO.

LAUDERDALE COUNTY

29+/- ACRES | \$290,000

BL **BACKWOODS**
LAND CO.

Lauderdale County | 29+/- Acres

Looking for the perfect spot to build your dream country home? Look no further than this stunning 29 +/- acre tract on Blizzard Road near Meridian, MS. With mature pine timber, rolling hills, and a large private pond, this property is the ideal location for a quiet and peaceful estate.

Take in breathtaking views of the lake from multiple house sites overlooking the private pond. And with power and water available on-site, building your dream home has never been easier.

Located in the highly sought-after West Lauderdale School District, your new driveway will be just 6 minutes from the Okatibee boat ramp, providing easy access to fishing and boating on the lake. Plus, West Lauderdale High School is just 10 minutes away, and West Lauderdale Elementary is just 5 minutes away.

Don't miss your chance to own this incredible property and start living your dream of country living. Contact us today to schedule a viewing!



Property Features

- Private pond
- Power and water
- Mature pine timber
- 5 minutes from Okatibee Lake boat ramp
- 10 minutes from West Lauderdale High School
- 5 minutes from West Lauderdale Elementary
- Multiple house sites

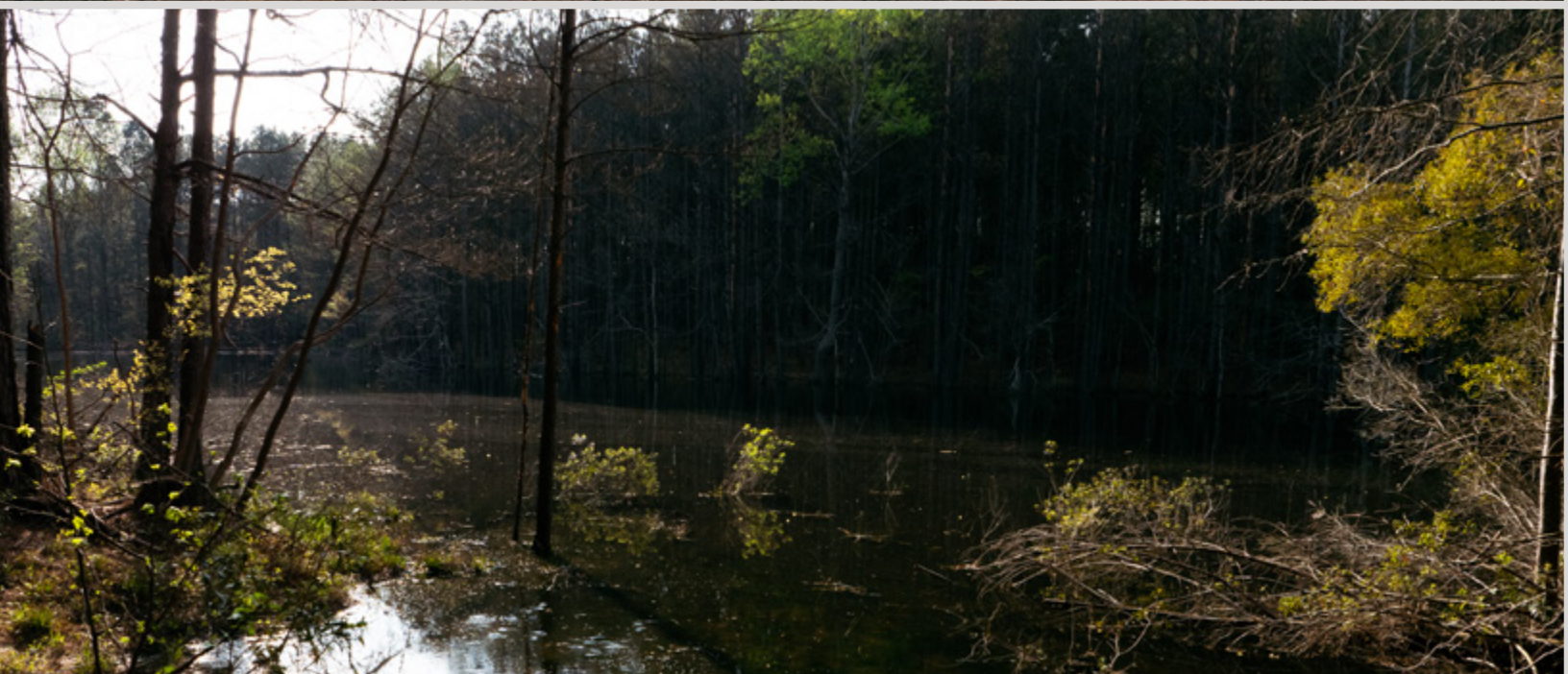


The Fishing is Great!

Have your own private pond to fish! This pond will provide great views to build a house beside and recreational use year-round. The Okatibee Lake boat ramp is only minutes away!







Timber Investment

Investing in land and timber is a great way to build wealth and security for the future. Real estate is a limited resource; and the Good Lord is just not making any more of it. As a result, there is a limited supply, which means that the value of real estate should continue to increase over time.





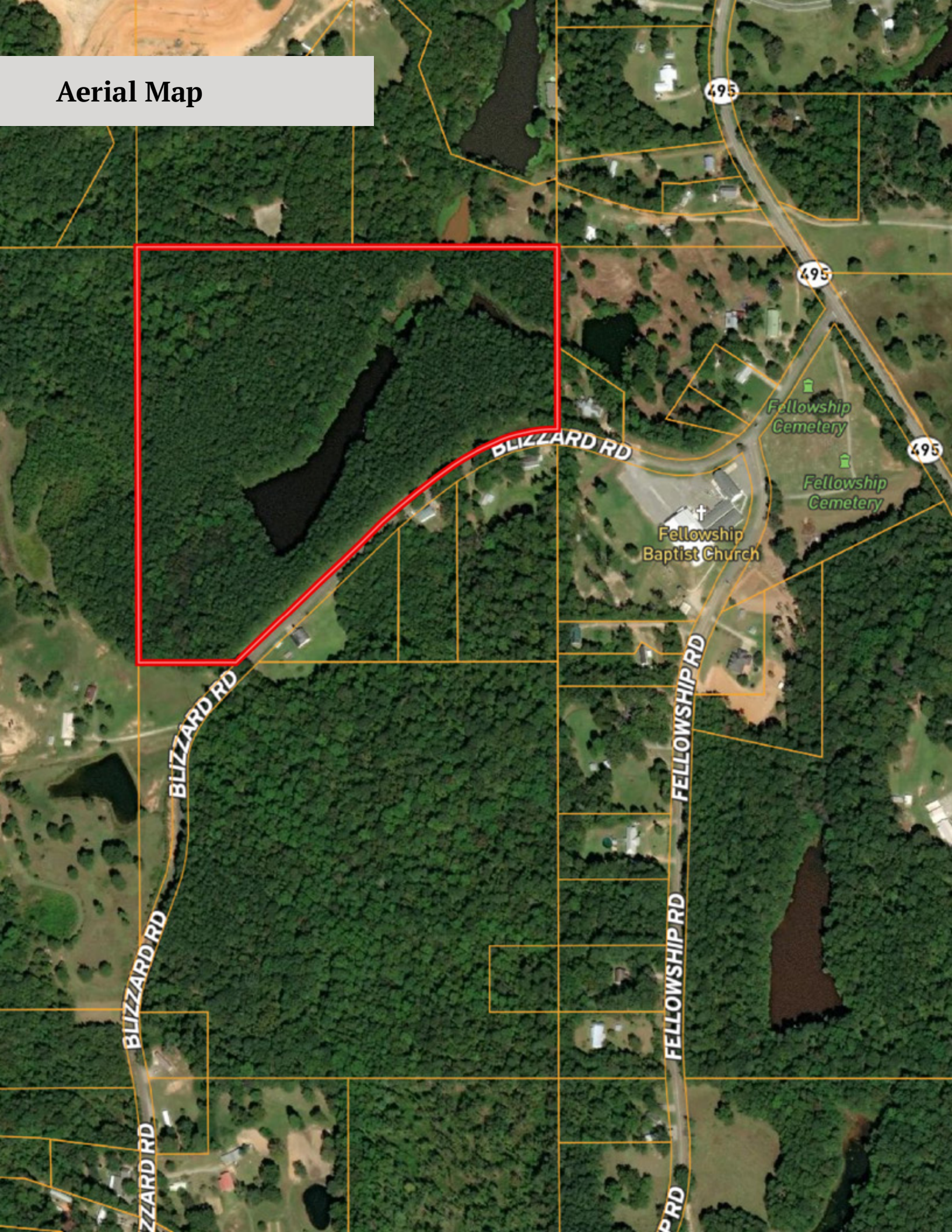
Mature Timber

A quiet estate surrounded by big timber is always a bonus! From camping to hunting, fishing, or simply relaxing, owning your own land can provide you with the perfect opportunity to get away from it all.

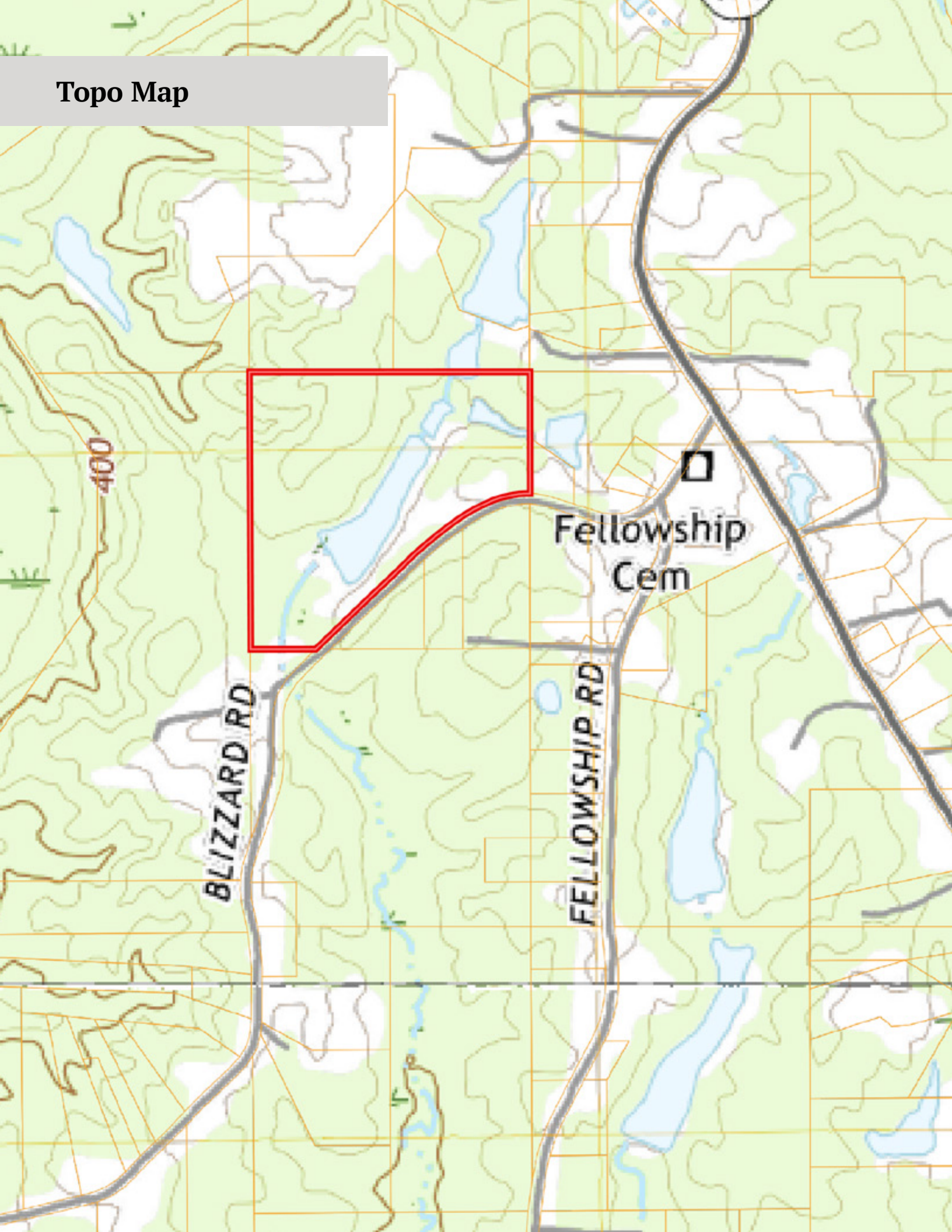




Aerial Map



Topo Map





Hunter Wooten

MANAGING BROKER

My name is Hunter Wooten and I am the Managing Broker of Backwoods Land Company. We specialize in selling Farms, Hunting land, Timber and Country Homes throughout Mississippi. We are interested in your PROPERTY or TIMBER located in Lauderdale County, Mississippi.

We understand the importance of providing exceptional deals to our clients and are experts on maximizing land assets. We are here to answer any questions you may have about buying or selling Farms, Hunting Land, Timber or Country Homes.

Please don't hesitate to contact us at 601-209-4882 for a free consultation.

We are committed to providing you with an excellent client experience.

Thank you for your time and we look forward to working with you.

(C) 601.500.2258

(O) 601.209.4882

hunter@backwoodsland.com



BL **BACKWOODS**
LAND CO.

(601) 209-4882 | www.backwoodsland.com

[f/backwoodsland](https://www.facebook.com/backwoodsland) | [@backwoodslandcompany](https://www.instagram.com/backwoodslandcompany)